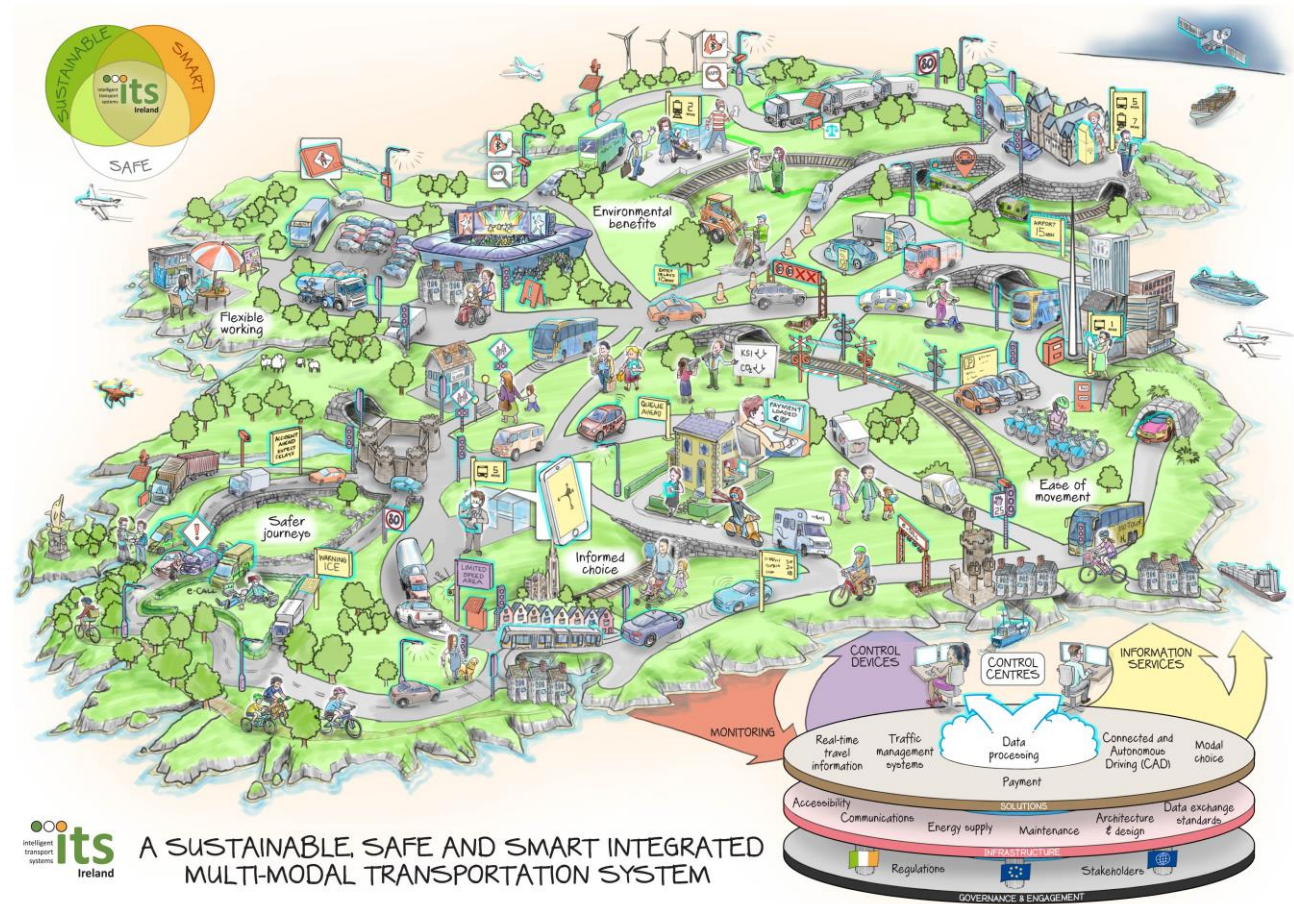


Intelligent Mobility and ITS in Ireland

Ciarán Carey



Ireland

- 5.1 million inhabitants with approx. 2 million in Greater Dublin Area
- 458 cars per 1000 inhabitants
- ITS related authorities include:
 - National Transport Authority
 - Transport Infrastructure Ireland
 - Road Safety Authority
 - 31 Local authorities
- Known for literature, history, Guinness, whiskey & the colour Green

ITS Ireland

- National ITS membership organisation and member of ITS Nationals
- Founded in 2010



Networking



Expertise



Leadership



Sustainability



Skills



Industry Voices



Accessibility



Innovation



Partnering



Smart Digital Solutions

ITS Ireland exists to promote the development and deployment of Intelligent Transport Systems and Services (ITS) for safer, more efficient and more sustainable transport.

ITS Ireland is a non-profit public / private sector partnership drawn from academic interests, consultancies, equipment suppliers, government bodies, local authorities, representative bodies and transport operators. Membership is open to all with the following categories of membership available: Corporate, Governmental and non-profit organisations, Individual and Student. For more information regarding membership please visit [here](#). To download the ITS Ireland Logo in pdf format click [here](#): ITS Logo

Please see link below for current ITS Ireland Strategic Plan: [ITS Ireland Strategic Plan 2014 -2019](#)

ITS Ireland

- National ITS membership organisation and member of ITS Nationals
- Founded in 2010
- itsireland.ie/the-big-picture



Variable Message Sign - (VMS)

Variable Message Sign (VMS)

The term Variable Message Sign (VMS) covers several types of sign that vary widely in terms of complexity, capability and cost. A VMS is a traffic sign whose message can be changed manually, electronically, mechanically, or electromechanically. The information is most often displayed in real-time and can be controlled either from a remote location or locally at the site.

Relevant Organisations:

[Daktronics Ireland](#)
[Elmore Group](#)
[Electro Automation Group](#)

Other Links:

[Traffic Signs Manual C3](#)

Gallery:



ITS in Ireland – Examples of Good Practice

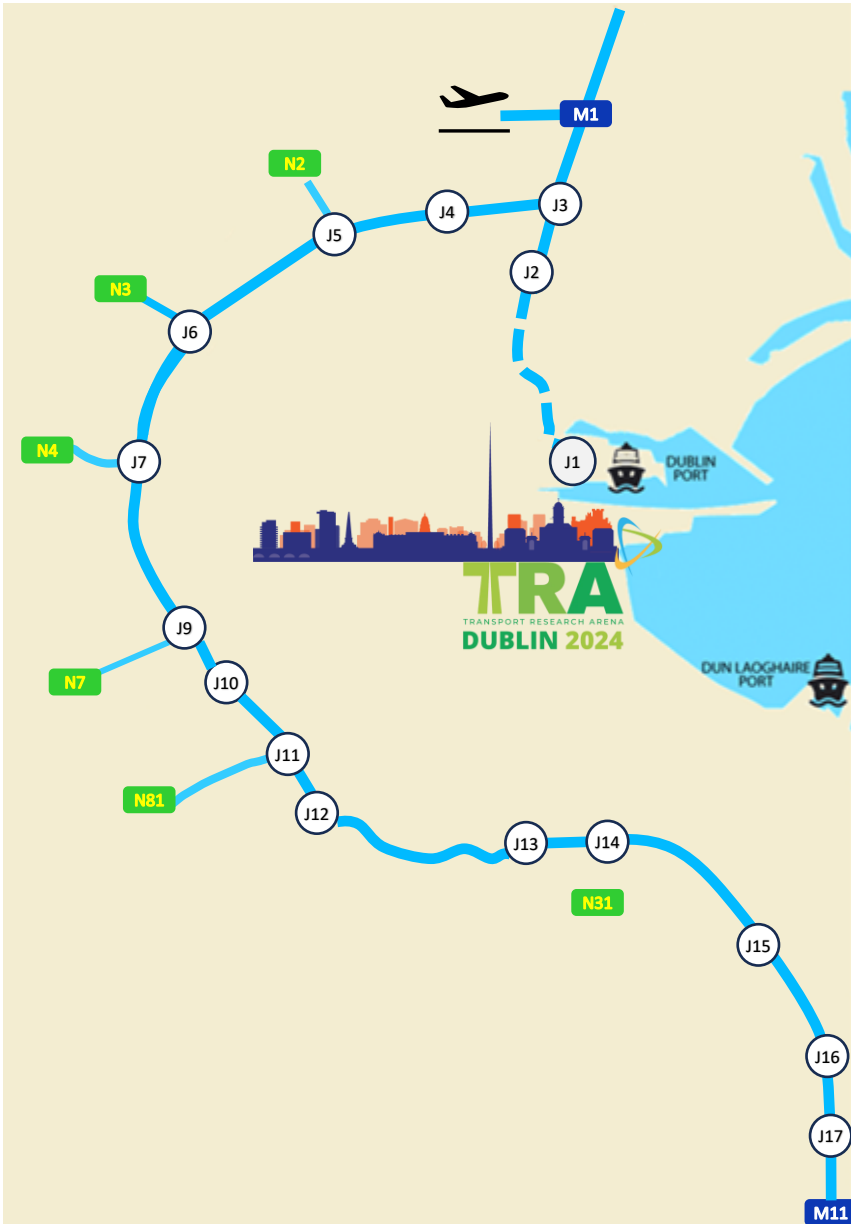
Motorway Operations
Control Centre

Network Intelligence
Management System (NIMS)

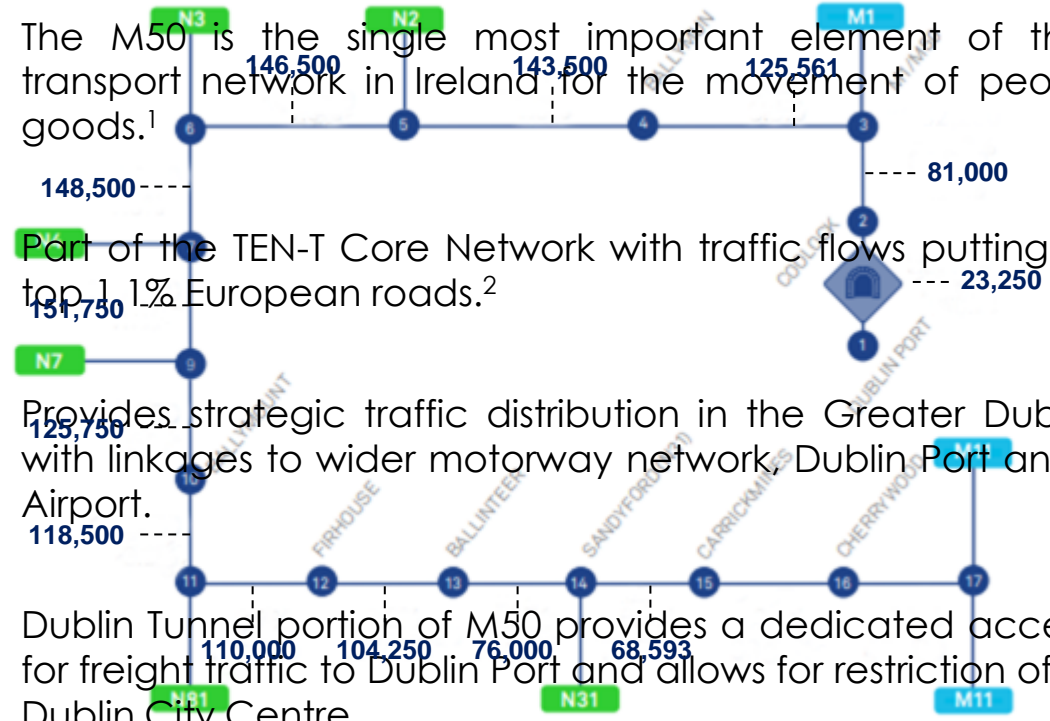
Motorway Traffic Flow
Optimisation

C-ROADS Ireland C-ITS pilot





- The M50 is the single most important element of the road transport network in Ireland for the movement of people and goods.¹
- Part of the TEN-T Core Network with traffic flows putting it in the top 1.1% European roads.²
- Provides strategic traffic distribution in the Greater Dublin Area with linkages to wider motorway network, Dublin Port and Dublin Airport.
- Dublin Tunnel portion of M50 provides a dedicated access route for freight traffic to Dublin Port and allows for restriction of HGVs in Dublin City Centre.



M50 Schematic Layout

¹[National Roads 2040 Final Report \(2023\)](#)

²[CEDR Pan European Road Network Performance Report \(2022\)](#)

ITS in Ireland – Examples of Good Practice

Motorway Operations
Control Centre

Motorway Traffic Flow
Optimisation

Network Intelligence
Management System (NIMS)

C-ROADS Ireland C-ITS pilot



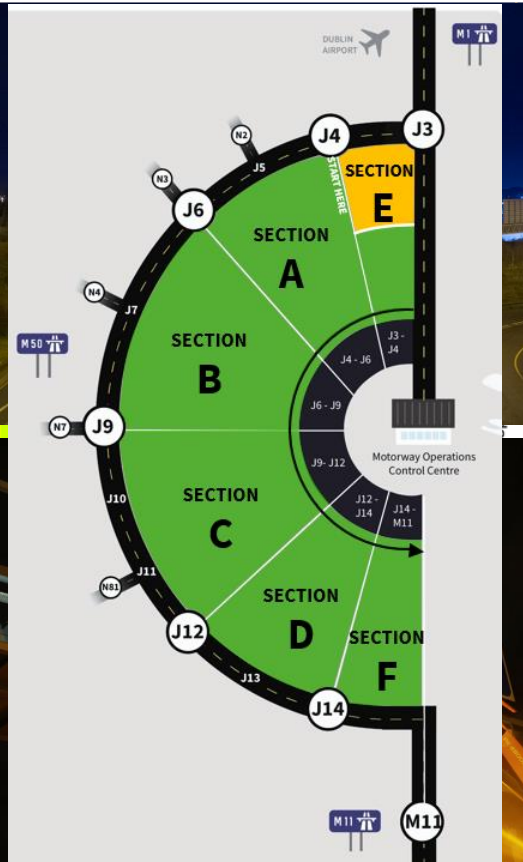
- 2 story extension to the existing building
- Bringing together Tunnel and Motorway control room
- Large video wall & space for additional personnel to handle increased operational capabilities

ITS in Ireland – Examples of Good Practice

Motorway Operations
Control Centre



Motorway Traffic Flow
Optimisation



Network Intelligence
Management System (NIMS)

C-ROADS Ireland C-ITS pilot

- Design and installation of ITS equipment, supporting infrastructure and some additional structures
- Works complete and displaying cautionary speeds
- Analysing operator and traffic response to improve performance ahead of introduction of speed limits



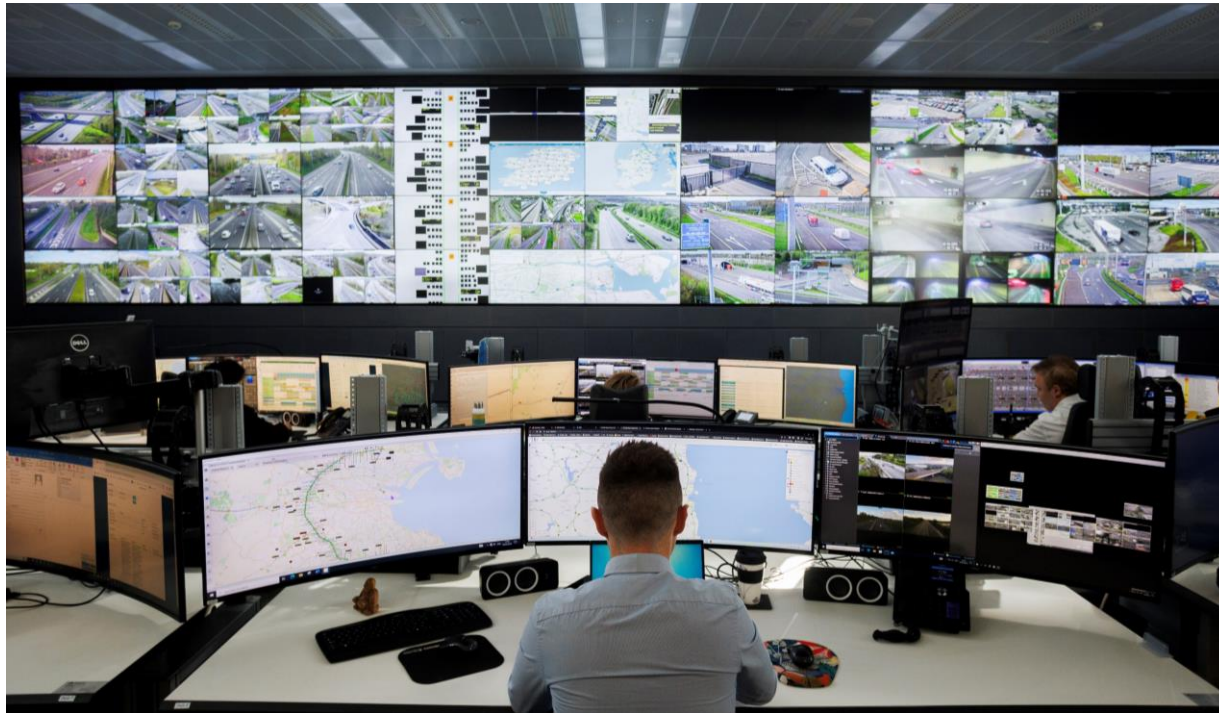
ITS in Ireland – Examples of Good Practice

Motorway Operations
Control Centre

Motorway Traffic Flow
Optimisation

Network Intelligence
Management System (NIMS)

C-ROADS Ireland C-ITS pilot



- New system to
 - Integrate data flows and subsystems
 - Centralise operator input
 - Enable enhanced functionality (e.g. Variable Speeds & lane control)
 - Automatically disseminate response to the roadside and across the web as well as through C-ITS technologies

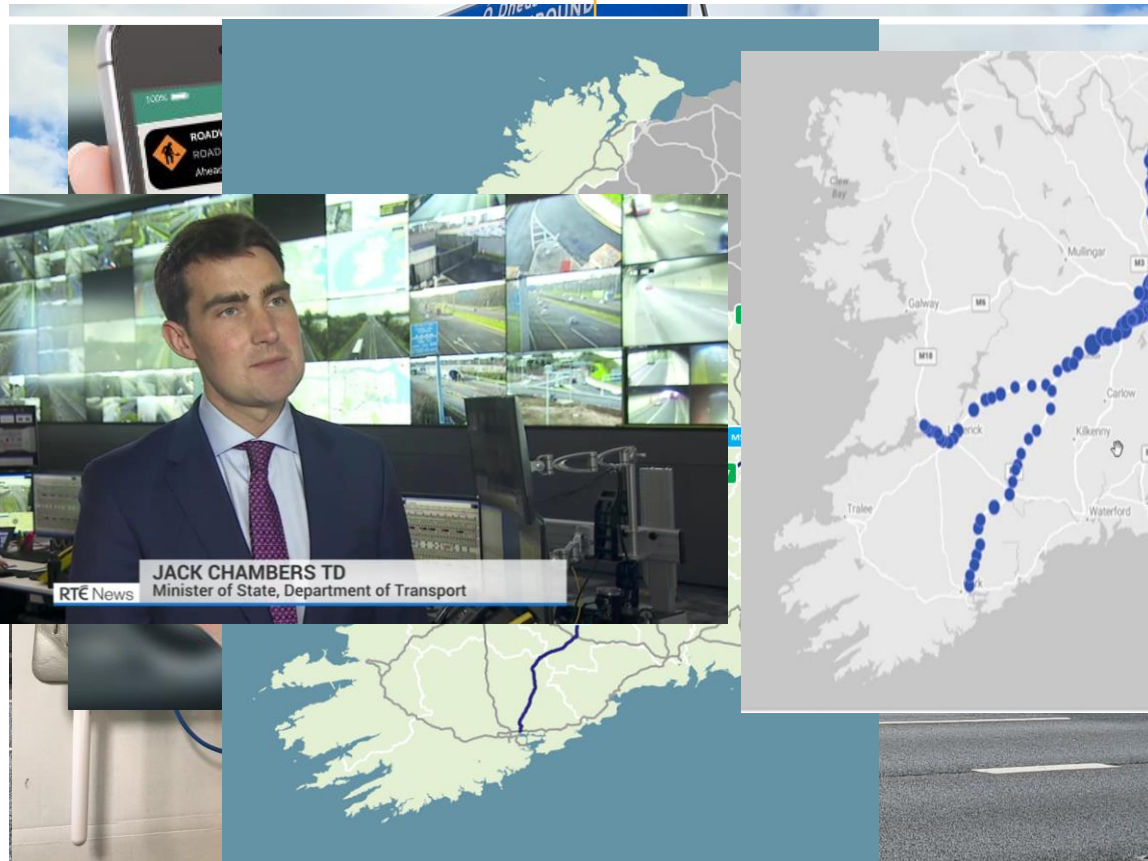
ITS in Ireland – Examples of Good Practice

Motorway Operations
Control Centre

Network Intelligence
Management System (NIMS)

Motorway Traffic Flow
Optimisation

C-ROADS Ireland C-ITS pilot



- C-ITS Pilot of Day 1 and 1.5 use cases primarily on the TEN-T Network.
- Message from NIMS direct to road users using cellular network and 74 ITS-G5 Road-Side Units.
- Road users receive message via On-Board Unit Tablet & Mobile App
- Ministerial launched in February; over 700 users to date

Thank You!

ciaran.carey@itsireland.ie
info@itsireland.ie



www.itsireland.ie



its
intelligent
transport
systems
ireland