



# ROADMAP TO BUILD A HOME FOR YOUR EVENT



# HOUSE OF EVENTS HOME OF YOUR INDUSTRY



RAI Amsterdam is not just any place. It's a home for your event to thrive - the perfect place to connect, innovate, create impact and have a great time.

Our house is your home.  
Welcome home. Explore the house.







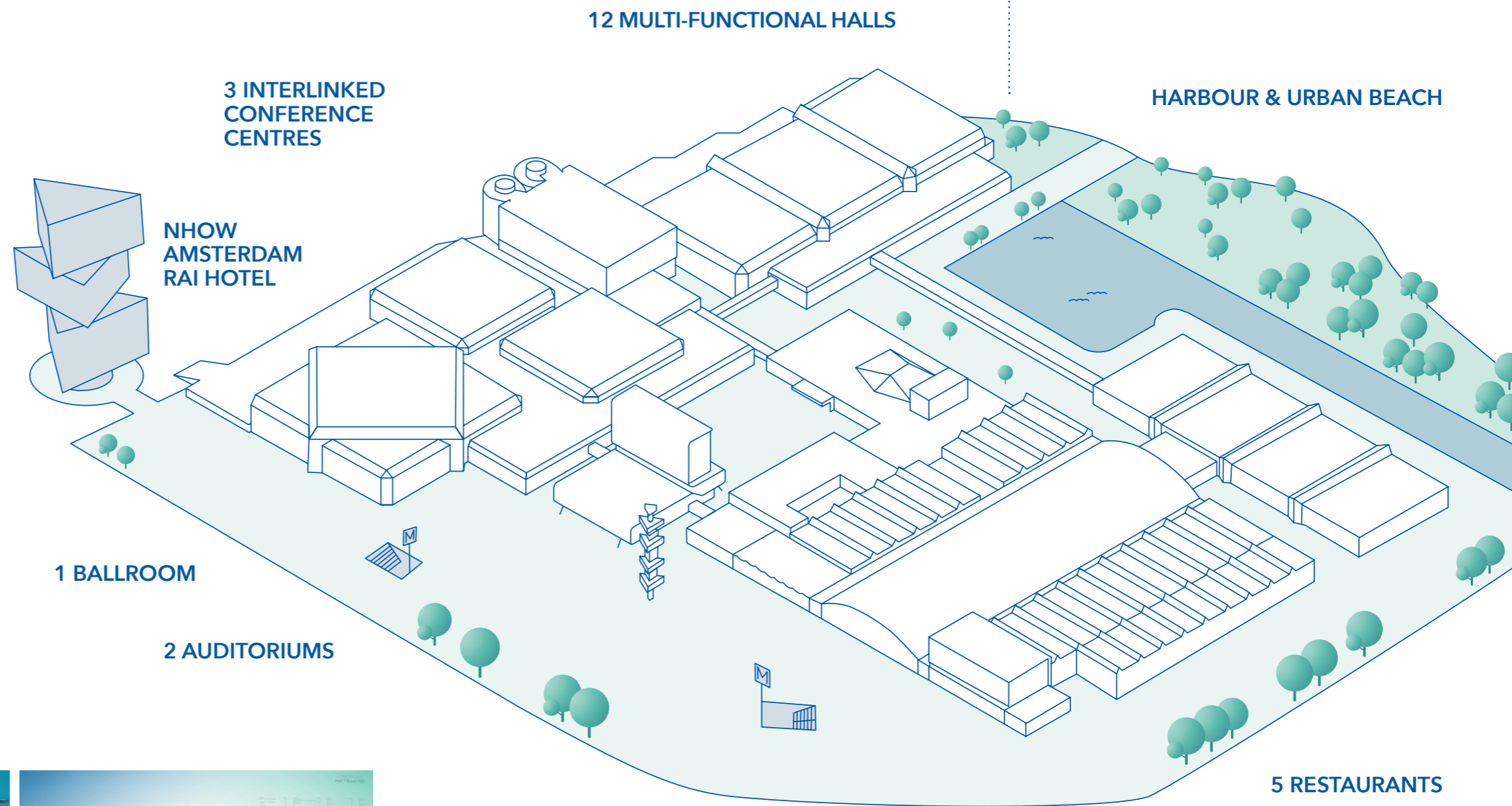
## PLAN YOUR ROAD TO SUCCESS

### UNLOCK YOUR EVENT AND ENTER A WORLD OF POSSIBILITIES. RAI HOLDS THE KEY – JUST MAKE YOURSELF AT HOME.

RAI Amsterdam has a rich history. Founded in 1893 as a bicycle industry association, RAI has grown in just over a century to become a leading international trade event and conference organisation. Now, 130 years later, RAI remains a premier networking organisation and platform for key industries. With over 600 events a year, our portfolio still spans the Logistics & Smart Mobility sector and our expertise has broadened to serve and connect the world's leading industries.

Today, our mission is the same: to bring together people, ideas and organisations to share knowledge, stimulate innovation and support economic growth. RAI Amsterdam has also committed itself to the sustainable development of people and communities, the economy, and the environment.

OUR WELL-CONNECTED VENUE OFFERS 116,200 SQM OF HIGHLY FLEXIBLE MEETING, EXHIBITION, BALLROOM AND PLENARY SPACE - GIVING YOU A HEAD START ON YOUR EVENT PLANNING.

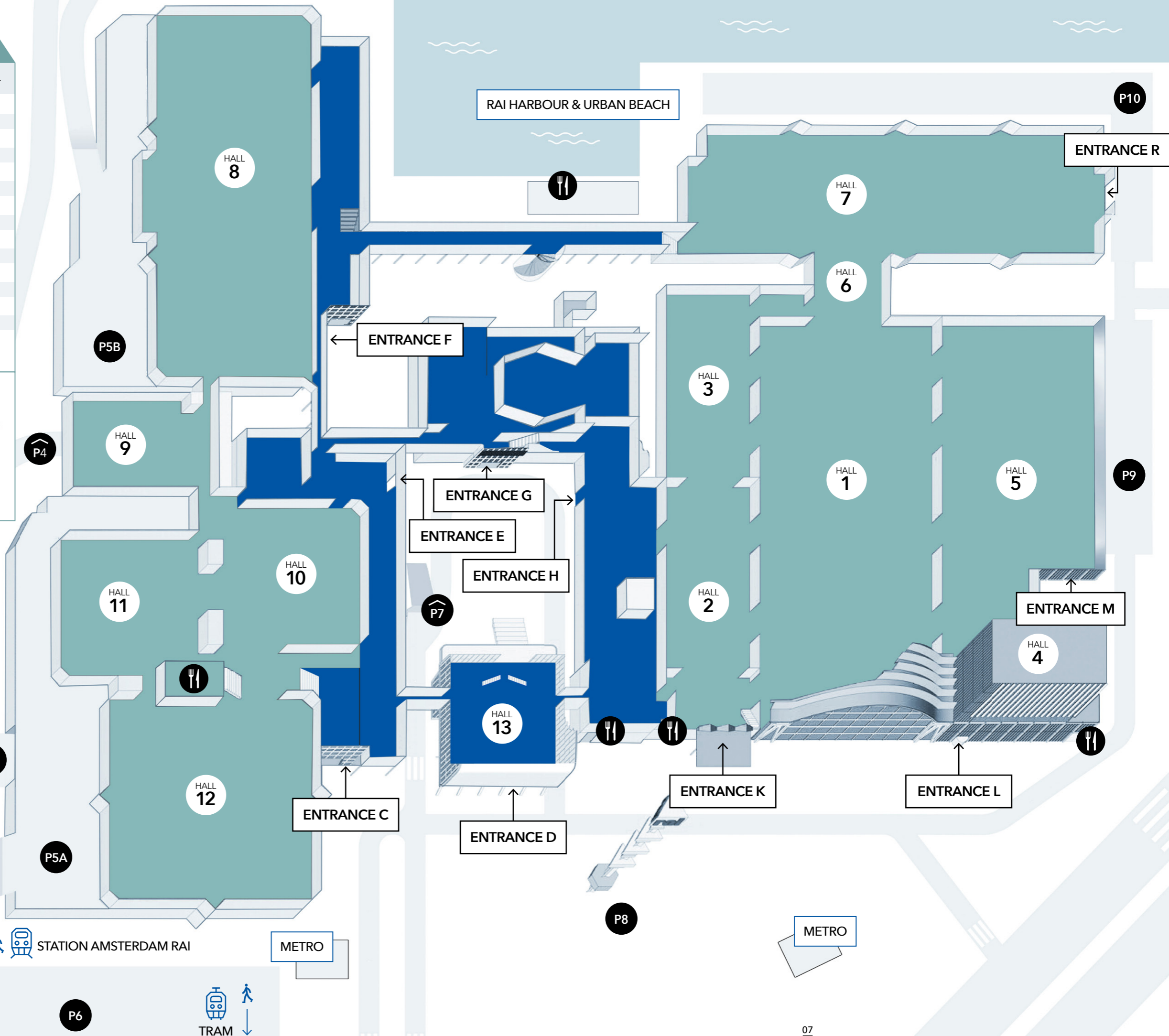
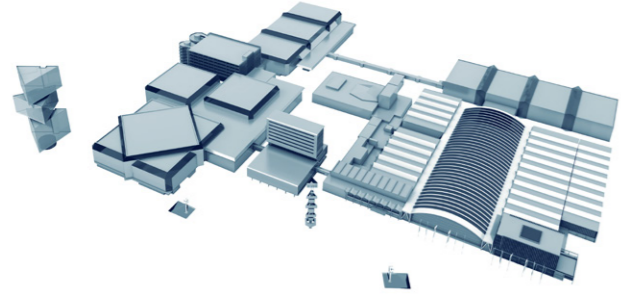


RAI AMSTERDAM IS THE GATEWAY TO THE CITY WHERE THE WORLD MEETS AMSTERDAM AND AMSTERDAM MEETS THE WORLD

# OVERVIEW HALLS

	[M <sup>2</sup> ]	[sqft]	☀️	🌳	☀️
Hall 1	15,000	161,459	6,900	10,000	•
Hall 1 + Balcony	18,240	196,334			•
Hall 2	4,060	43,701	1,840	4,000	•
Hall 3	3,920	42,195	1,600	4,000	•
Hall 4 > Amtrium	540	5,812	264	500	•
Hall 5	11,395	122,654	8,390	6,740	•
Hall 6	1,025	11,033			•
Hall 7	10,460	112,590	4,040	8,000	•
Hall 8	12,600	135,625	4,680	10,000	•
Hall 9	2,845	30,623	2,148	1,500	•
Hall 10	3,970	42,733	1,800	4,000	•
Hall 11	4,165	44,832	1,890	4,000	•
Hall 12	9,035	97,252	3,900	7,500	•
Hall 13 > Ballroom	1,985	21,366	1,070	2,000	•

Figures are guidelines, no rights can be derived from these figures.  
 • = daylight available

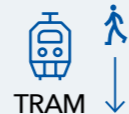


nhow AMSTERDAM RAI HOTEL

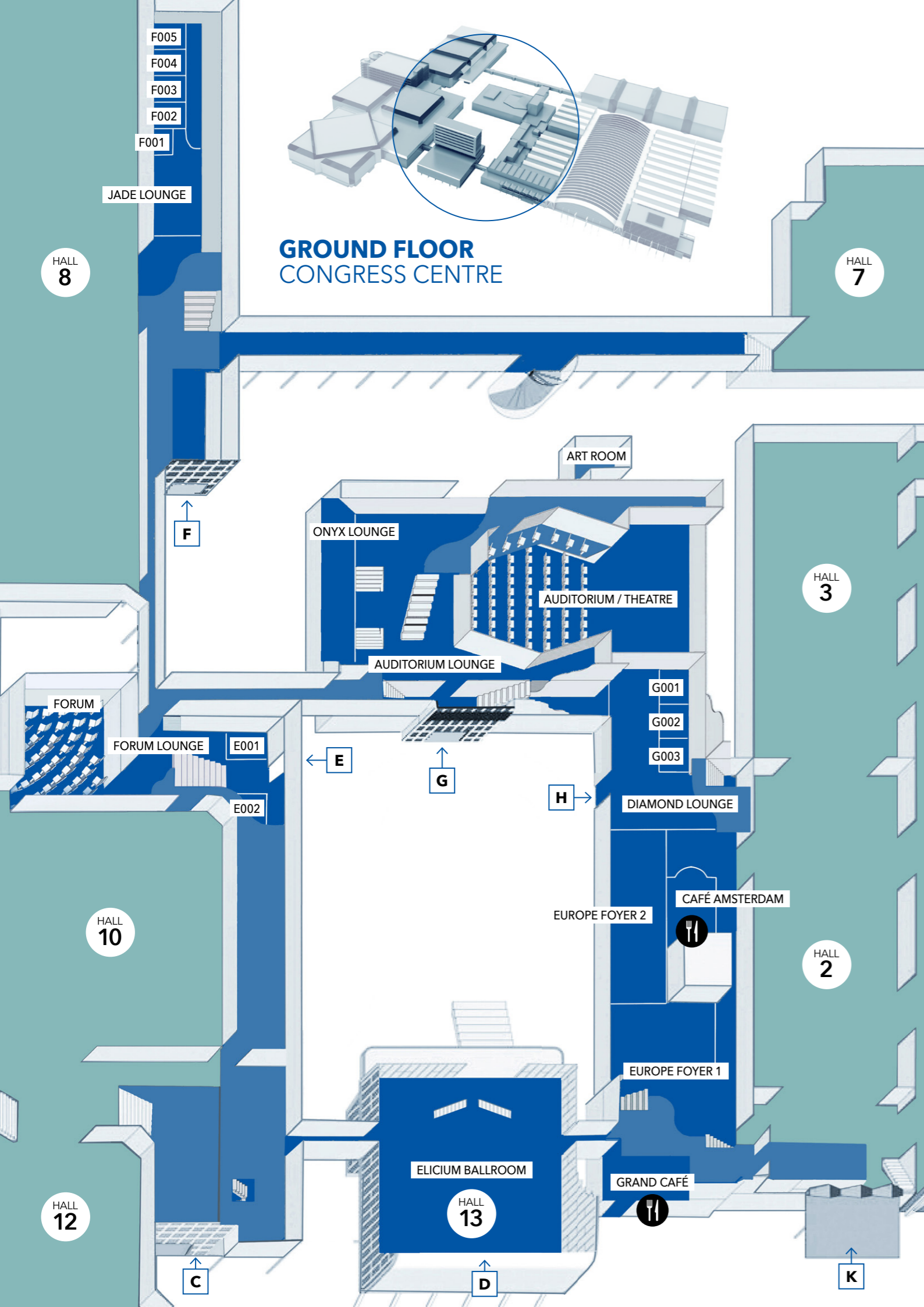
STATION AMSTERDAM RAI

METRO

METRO







## GROUND FLOOR CONGRESS CENTRE & ELICIUM BALLROOM

ENTRANCE D - ELICIUM	[M <sup>2</sup> ]	[sqft]	👤	👤	👤	👤	👤	☀️	🍷	☀️
Elicium Ballroom	1,985	21,366	1,974	760	1,104	130		1,070		•
Elicium 1	869	9,353	700	288	462	92				•
Elicium 2	1,116	12,013	1,100	432	654	104				•

ENTRANCE E - FORUM CENTRE	[M <sup>2</sup> ]	[sqft]	👤	👤	👤	👤	☀️	🍷	☀️
E001*	48	517					10		•
E002*	38	409					8		•
Forum	755	8,127	709						
Forum Lounge	1,120	12,056					390	500	•

ENTRANCE F - PARK CENTRE	[M <sup>2</sup> ]	[sqft]	👤	👤	👤	👤	☀️	🍷	☀️
F001*	18	194					8		
F002	90	969	97	40	60	26	32	60	
F003	90	970	97	40	60	26	32	60	
F004	90	971	97	40	60	26	32	60	
F005	90	972	97	40	60	26	32	60	
F002-F003/F003-F004/F004-F005	180	1,938	176	84	120	40	52	96	
F002-F004/F003-F005	270	2,906	250	120	180	60	72	136	
F002-F005	360	3,875	318	160	252	80	92	208	
Jade Lounge	336	3,616						120	250

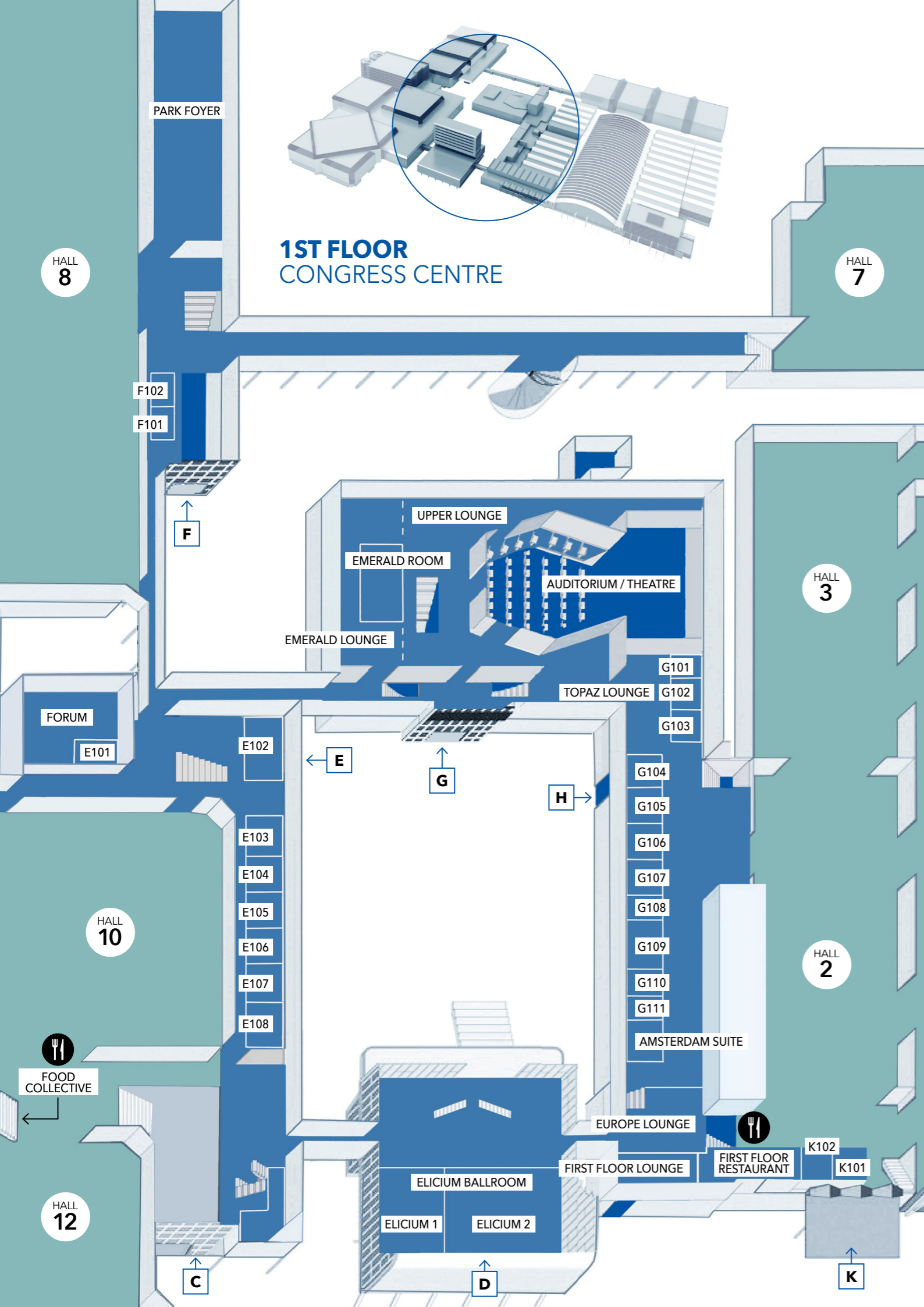
ENTRANCE G - AUDITORIUM CENTRE	[M <sup>2</sup> ]	[sqft]	👤	👤	👤	👤	☀️	🍷	☀️
Onyx lounge	795	8,557						370	500
Auditorium Ground Floor + Balcony	1,500	16,146	1,732						•
Auditorium Ground Floor	1,075	11,571	1,248						•
Auditorium Lounge + Upper Lounge	2,660	28,632							•
Auditorium Lounge	1,600	17,222					496	1,250	•
Upper Lounge	1,060	11,410					470	700	•
Dressing Room 1-3	18	194							•
Artist Foyer*	88	947							•
G001	51	548	50	10	36	15	20	30	
G002	44	474	30	10	24	12	16	20	•
G001-G002	95	1,022	110	32	72	31	36	56	•
G003*	43	463					12		•
Diamond Lounge	745	8,019						240	500
Europe Foyer	1,833	19,730						1,030	1,250
Europe Foyer 1	1,163	12,518						730	750
Europe Foyer 2	670	7,211						410	500

RESTAURANTS	[M <sup>2</sup> ]	[sqft]	🍷	☀️
Grand Café	480	4,359		200
Café Amsterdam	245	2,637		80

Figures are guidelines, no rights can be derived from these figures. \*Fixed set up. \*\*Only in combination with halls. • Available



# 1ST FLOOR CONGRESS CENTRE



# 1ST FLOOR CONGRESS CENTRE & ELICIUM BALLROOM

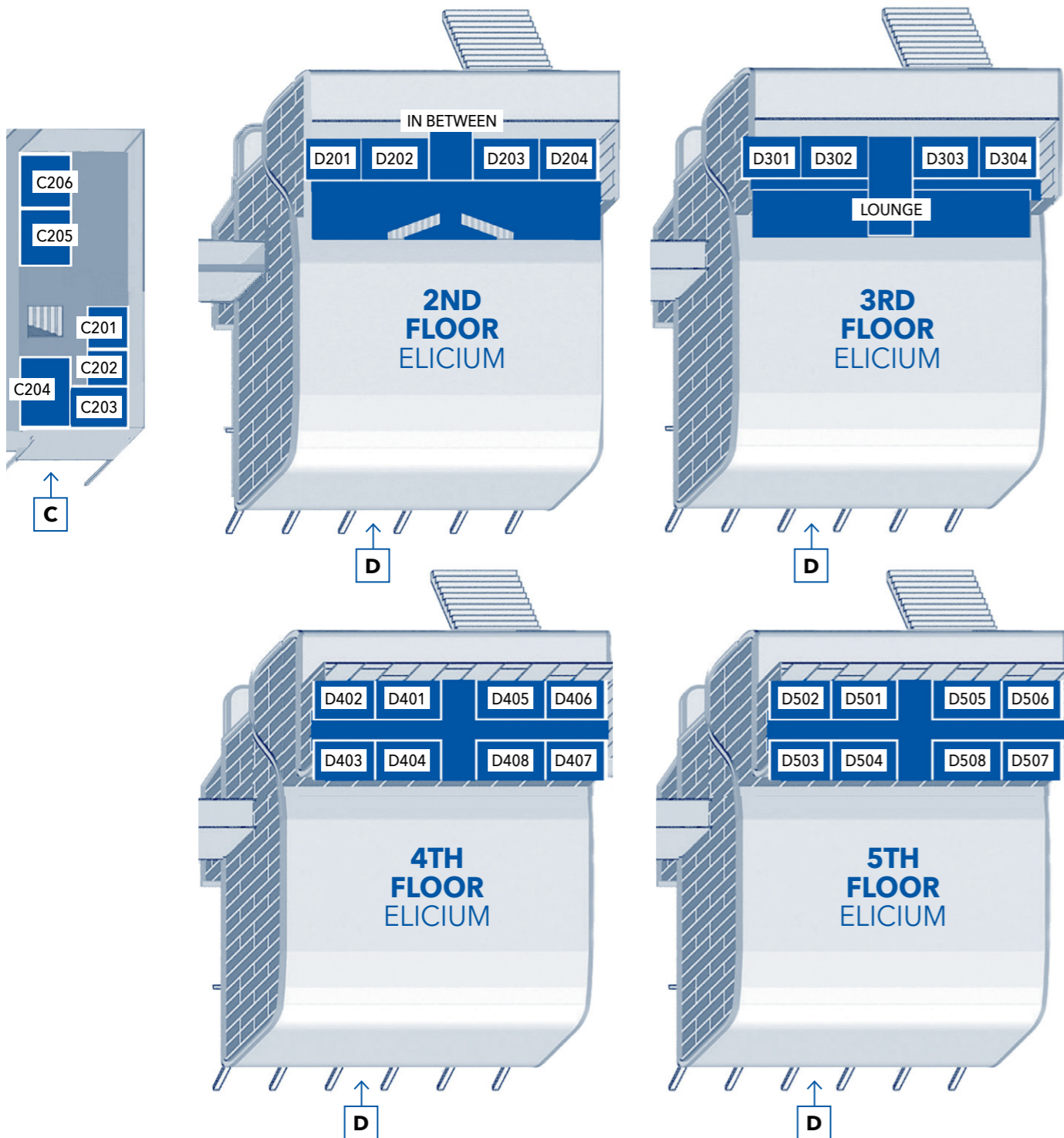
ENTRANCE C	[M <sup>2</sup> ]	[SqM]	⌘	⌘	⌘	⌘	⌘	⌘	⌘	⌘	⌘
Holland Lounge	310	3,336									•
<b>ENTRANCE D - ELICIUM</b>											
Elicium Ballroom	1,985	21,366	1,974	760	1,104	130		1,070			•
Elicium 1	869	9,353	700	288	462	92					•
Elicium 2	1,116	12,013	1,100	432	654	104					•
<b>ENTRANCE E - FORUM CENTRE</b>											
Ruby Lounge	424	4,564						220	250		•
E101	20	215					14				•
E102	239	2,573	240	102	138	42	60	120			•
E103	120	1,292	128	48	72	29	38	64-80			•
E104	124	1,335	128	48	72	29	38	64-80			•
E105/E106	80	861	70	32	48	22	28	40-50			•
E107	124	1,335	128	48	72	29	38	64-80			•
E108	120	1,292	128	48	72	29	38	64-80			•
E103-E104 or E107-E108***	244	2,626	288	96	138	42	64	140			•
E104-E105 or E106-E107***	204	2,195	216	80	114	40	60	100			•
E105-E106***	160	1,722	178	64	90	34	48	90			•
E103-E104-E105-E106-E107-E108***	648	6,975	704	256	366	98	160	360			•
<b>ENTRANCE F - PARK CENTRE</b>											
Park Foyer	1,600	17,222	1,433								•
F101**	94	1,011					14				•
F102**	44	473					12				•
<b>ENTRANCE G - AUDITORIUM CENTRE</b>											
Auditorium + Balcony	1,500	16,146	1,732								•
Upper Lounge	1,060	11,410						470	700		•
Emerald Room	240	2,583	266	98	168	44	56	130			•
Emerald Lounge	595	6,405						310	280		•
Dressing Room 4-8*	18	194									•
Dressing Room 9*	27	291									•
G101	35	377	24	10	22	16	16				•
G102	125	1,346	154	57	90	26	36	64			•
G103	125	1,346	150	53	90	26	36	64			•
G102-G103	250	2,690	300	114	186	54	64	128			•
Topaz Lounge	495	5,328						190	250		•
G104	120	1,292	120	49	76	30	40	64			•
G105	120	1,292	120	49	76	30	40	64			•
G104-G105/G106-G107	240	2,584	279	110	170	54	68	128			•
G106	120	1,292	120	49	76	30	40	64			•
G107	120	1,292	120	49	76	30	40	64			•
G109	100	1,076	95	42	66	34	36	56			•
G108/G110/G111	45	484	32	18	18	14	16	24			•
Amsterdam Suite*	70	753					22				•
<b>ENTRANCE K</b>											
K101**	80	861					22				•
K102**	80	861					22				•
First Floor Lounge	205	2,207									•
Europe Lounge	282	3,035									•
<b>ENTRANCE R</b>											
R101**	35	376					6*				•
R102**	72	775					12*				•
<b>RESTAURANTS</b>											
First Floor Restaurant	480	5,167					238				•
The Food Collective	640	6,888					220				•

Figures are guidelines, no rights can be derived from these figures. \*Fixed Seating. \*\*Only in combination with halls. \*\*\* Meeting rooms are flexible to fit your meeting requirements from 70 to 704 persons (flexible walls). • Available



## 2ND FLOOR ENTRANCE C

## 2ND/3RD/4TH/5TH FLOOR ELICIUM



## 2ND FLOOR ENTRANCE C & 2ND/3RD/4TH/5TH FLOOR ELICIUM

ENTRANCE C	[M <sup>2</sup> ]	[Sqft]	⋮	⋮	⋮	⋮	⋮	⋮	⋮
C201*	48	517					14		•
C202*	45	484					14		•
C203*	75	807					20		•
C204*	58	624					18		•
C205**	34	366					8		
C206**	40	431					8		

ENTRANCE D - ELICIUM	[M <sup>2</sup> ]	[Sqft]	⋮	⋮	⋮	⋮	⋮	⋮	⋮
D201	105	1,130	94	30	42	22	28		•
D202	105	1,130	98	38	54	22	28		
D201-D202 / D203-D204	210	2,260	198	72	126	54	60	104	•
D203	105	1,130	98	38	54	22	28		
D204	105	1,130	94	30	42	22	28		•
D301	50	538	28	14	24	18	26		•
D302	40	431	20	10	18	10	18		•
D303	40	431	20	10	18	10	18		•
D304	50	538	28	14	24	18	26		•
D401	40	431	20	10	18	10	18		•
D402	50	538	28	14	24	18	26		•
D403	70	753	48	22	39	20	28		•
D404	50	538	35	18	30	16	22		•
D405	40	431	20	10	18	10	18		•
D406	50	538	28	14	24	18	26		•
D407	70	753	48	22	39	20	28		•
D408	50	538	35	18	30	16	22		•
D501*	40	431					11		•
D502	50	538	28	14	24	18	26		•
D503	70	753	48	22	39	20	28		•
D504	50	538	35	18	30	14	22		•
D505*	40	431					11		•
D506	50	538	28	14	24	18	26		•
D507	70	753	48	22	39	20	28		•
D508	50	538	35	18	30	16	22		•
In Between*	30	323					8		

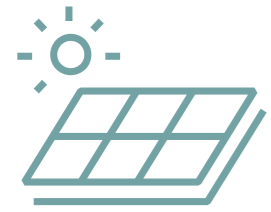
Figures are guidelines, no rights can be derived from these figures. \*Fixed Seating. \*\*Only in combination with halls. • Available







Amtrium includes office spaces, conference rooms and a restaurant with rooftop terrace. A sustainable, multifunctional building, it also includes a greenhouse-like climate zone with plants.



**3969**  
SOLAR  
PANELS



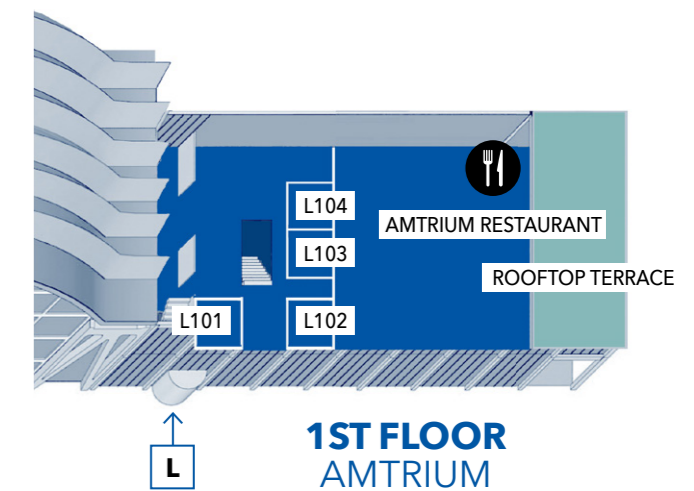
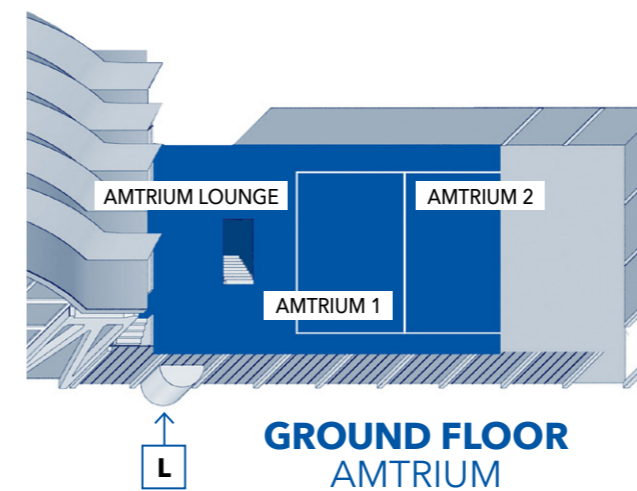
## GROUND & 1ST FLOOR AMTRIUM 1 AND 2

GROUND FLOOR - AMTRIUM	[M <sup>2</sup> ]	[sqft]							
Amtrium 1	275	2,970	305	128	168	48	64		
Amtrium 2	265	2,852	270	128	168	46	60		
Amtrium 1+2	540	5,812	500	194	294	84	108		
Amtrium Lounge	600	6,458							•
Amtrium incl. Lounge	1,140	12,271							•

FIRST FLOOR - AMTRIUM	[M <sup>2</sup> ]	[sqft]							
L101	32	344	27	8	12	10	16		•
L102	31	333	27	8	12	10	16		•
L103	53	570	56	14	30	14	20		
L104	53	570	61	14	30	14	20		
L103-104	106	1,140	126	36	70	24	36		
Lounge L1	267	2,874							•

RESTAURANT	[M <sup>2</sup> ]	[sqft]							
Amtrium Restaurant	538	5,791						250	•

Figures are guidelines, no rights can be derived from these figures.





#03  
/23

# HOUSE OF EVENTS HOME OF YOUR INDUSTRY



**rai**  
AMSTERDAM

**Our house is your home**  
Please feel free to contact us at  
+31 (0)20 549 17 22  
raimarketing@rai.nl  
[www.rai.nl](http://www.rai.nl)